

# Decorative colours for the firing range 1000° – 1250°C

Netty Janssens  
netty.janssens@worldonline.nl  
www.nvk-keramiek.nl/leden/janssens.html

The Dutch ceramics artist Netty Janssens has put the BOTZ Unidekor colours to the test and happily divulges her experience she has made with them.

## glaze + paint Inglaze decoration by Netty Janssens

The application: BOTZ Unidekor on a ceramics object undercoated with, e.g. BOTZ 9108. Purchased biscuit fired objects or tiles are suited very well for decoration. All 24 Unidekor colours can be mixed together. Experiment and you will see that BOTZ Unidekor features that brilliant luminosity even on coloured glazes!



Surmann & Klück Glasuren GmbH  
Hafenweg 26a  
D-48155 Münster  
Phone +49 (0)251 65402  
Telefax +49 (0)251 663012  
info@botz-glasuren.de  
www.botz-glasuren.de

In the current BOTZ catalogue, you will find the complete BOTZ liquid glazes program, with many ideas on designing and tips on processing.

Request your copy right away!

# BOTZ UNIDEKOR®

## glaze + paint

Inglaze decoration  
by Netty Janssens



**BOTZ UNIDEKOR®**

BOTZ offers a wide range of tested liquid glazes and Unidekor colours for the creative design of ceramics.

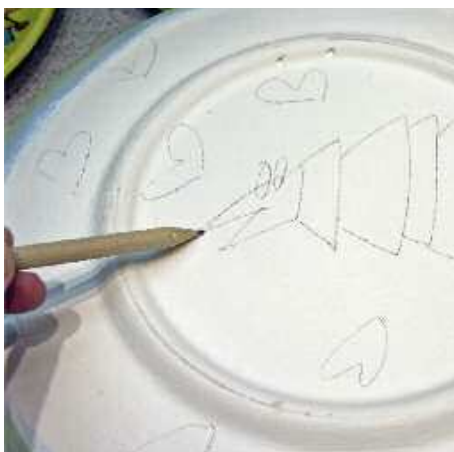
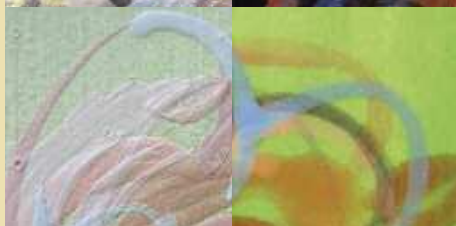
The Dutch ceramics artist **Netty Janssens** has refined the application technology for BOTZ Unidekor. After many hours in the workshop and extensive testing, the result is just charming. See for yourself!

BOTZ Unidekor – like all BOTZ products – is **non-toxic**. This means, they are lead-free and do not contain any hazardous substances in a concentration which would have to be identified in accordance with the German Regulations on Hazardous Substances. **The Unidekor colours are available in 30 and 200 ml jars.** Glazes in 200 and 800 ml jars.

before firing      after firing



after firing



Glaze purchased or self-made biscuit fired objects with BOTZ 9108 transparent matt, 9106 transparent glossy or also coloured glazes such as 9107, 9487–9491, 9612, and let dry. (9102 is not suited!)

Sketch out the subject with a pencil on the glaze fast to handling. Don't worry, the sketch will disappear during firing.

**BOTZ Unidekor** is available in 24 colours, in 30 ml and 200 ml jars. The colours can be mixed together and be diluted with water, if required.



Apply **BOTZ Unidekor** to the dry glaze using a decoration brush.

**BOTZ Unidekor** are matt **before firing** and less intensively bright. Firing according to the indicated firing range of the basic glaze.

**After firing** of the ceramics (here: 1050°C), **BOTZ Unidekor** will develop the full colour intensity.

Photography by Netty Janssens 2010

**BOTZ**